

FRIENDS UNIVERSITY OPERA

Feb. 26-27, 2022

*Ned Rorem's*

**FABLES**

*Giann Carlo Menotti's*

**Old Maid  
& The Thief**



# FABLES

# Old Maid & The Thief

by  
NED ROREM

by  
GIANN CARLO MENOTTI

TEXT: POEMS BY JEAN DE LA FONTAINE  
TRANSLATED BY MARIANNE MOORE

BY ARRANGEMENT WITH LUCK'S  
MUSIC LIBRARY.

BY ARRANGEMENT WITH BOOSEY  
& HAWKES, INC., PUBLISHER AND  
COPYRIGHT OWNER.

## DIRECTOR'S NOTE

*Fable: a succinct fictional story that illustrates or leads to a particular moral lesson, which may at the end be added explicitly as a concise maxim or saying.*

*Morality Play: an allegorical drama in which characters personify moral qualities (charities or vices) in which a moral lesson is taught.*

*"Love when your slip knots drawn, Farewell, good sense."*

*"And so if you are weak or invincible, the court says white is black, or that black crimes are white."*

*"The devil couldn't do what a woman can, make a thief of an honest man."*

Ned Rorem's opera **FABLES** is a collection of 5 micro-operas, each featuring a colorful cast of characters that explore those inner vices, bad attitudes, the little lies we tell ourselves about how our actions will have no consequences. Each of the operas tell a simple story contrasted by complex but hauntingly tuneful music. The stories are anthropomorphized because for some reason, humans will accept being told how to behave if an "animal" illustrates it, but are less open to being told the same thing from another human. Our students have stretched themselves artistically and musically with this work and learning how to tell the story of a full opera in the span of 2-5 minutes is a challenge in itself.

Giann Carlo Menotti's one-act opera **OLD MAID AND THE THIEF** (originally conceived as a radio opera) pairs seamlessly with the Rorem. This morality play reveals that, unfortunately, over the centuries, humanity hasn't made much progress toward enlightenment. As the layers are peeled away in this show, we find those ancient vices of Aesop's time, jealousy, pride, avarice, sloth, lust, still at our 21st century core. Color has often been associated with certain vices and it felt natural to intertwine this story with that visual enhancement for this production. This truly ensemble opera presents a challenge to our students as well in that they each have to carry their share of continual 60 minutes of singing. It never stops, there is little off stage or down time. Our students have certainly risen to this challenge. I hope these works will allow you to gain a renewed commitment to self examination and change through the colorful weaving of our fabled musical stories as we expose and remind ourselves of those historically dark parts of our inner selves that we don't like to talk about at parties.

# CAST

## *Fables*

### **The Lion in Love**

**Voice 1** Faith Cox  
**Voice 2** Abigail Hale  
**Voice 3** Salma Peña  
**Lion** Brandon Rose

### **The Sun and the Frogs**

**Frogs** Lucy Enns, Joshua Kelley  
**Chorus** Davis Green, Rachel Mullen

### **The Bird Wounded By An Arrow**

**Bird** Abigail Hale  
**Chorus** Lucy Enns, Salma Peña

### **The Fox and the Grapes**

**Fox** Zachary Garraway  
**Chorus** Jyavon Hill, Brandon Rose

### **The Animals Sick With Plague**

**Lion** Salma Peña  
**Fox** Zachary Garraway  
**Ass** Faith Cox  
**Chorus** Abigail Hale, Braden Sweet  
**Chorus of Animals** Full cast

## *Old Maid and the Thief*

**Miss Todd, Old Maid (unmarried)** Hannah Howard  
**Bob, Wanderer (or Thief)** Jordan Roth  
**Laetitia, Miss Todd's Maid** Naomi Cavanaugh  
**Miss Pinkerton,  
Miss Todd's Spinster Neighbor** Bethany Filer



# PRODUCTION

Stage Director | Ashley Winters  
Music Director & Producer | Dr. Matthew Schloneger  
Rehearsal Pianist & Vocal Coach | Vanessa Whalen  
Scenic/Lighting Design and Construction | Jacob Carraher  
Costumer | Emily Baldrige  
Scenic Projections for Fables | Lisa Buck  
Technical Director | Bob Hett  
Stage Manager | Davis Green  
Follow Spot Operator | Andrea Powers  
Seamstress | Emily Kreis  
Program/Poster Artist | Faith Cox  
Program Design, Publicity | Alyssa Whalen

# MUSICIANS

## *Fables*

Pianist | Vanessa Whalen

## *Old Maid & The Thief*

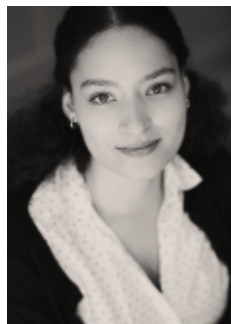
Orchestra Conductor, Gabriel Karst  
Violin 1 | Laura Black  
Violin 2 | Porter Wilkes  
Viola | Kay Buskirk  
Cello | Joshua Mitchell  
Bass | Devon Gassman  
Flute | Amy Hoffman  
Clarinet | Chris Johnson  
Oboe | Cindy Thompson  
Bassoon | Kimme Whittemore  
Horn 1 | Denise Kintzel  
Piano | Vanessa Whalen  
Timpani & Percussion | Rachel Cutler

# THANKS

Dr. Amy Bragg Carey  
Dr. Rayvon Moore  
Robyn Mabe  
Alyssa Whalen

# CAST BIOS

## Naomi Cavanaugh



Native to California, Naomi Cavanaugh is a soprano currently living in Wichita. Naomi is working to complete her B.M. in Voice Performance at Friends where She's studying with voice instructor, Ashley Winters. Naomi has performed many roles including Susanna in *Le nozze di Figaro*, Papagena, First Spirit, and Pamina from *Die Zauberflöte*, and the title role in Handel's *Rodelinda*. She has appeared in the ensembles of *Trial by Jury* and *Béatrice et Bénédic*t with Landlocked Opera

Company, as well as the ensemble of *Candide* with Angels Vocal Art Opera Intensive. Most recently Naomi made her Wichita, Kansas debut with the Opera Seme Young Artist Program as Vitellia in Mozart's *La Clemenza di Tito* in the summer of 2021.

## Faith Cox



Faith Cox is a junior at Friends University and is currently majoring in Voice. She has participated as backstage help and has performed on stage at Friends. Her latest character was Lady Bracknell in the *Importance of Being Earnest*. Faith, first and foremost would like to thank her parents, who are currently serving the Lord in Northern Ireland. Though their support is from afar, it has been vital in her journey through college and this production. Secondly, she'd like to thank her

extended family coming from Wisconsin. Thirdly, she'd like to thank the family she has made here in Wichita along the way—friends and professors alike—who have surrounded her. Lastly... all glory be to God. <3 P.S. Faith hopes you enjoy the show!

## Bethany Filer



Passionate about the creative process of performing, soprano Bethany Filer delves into the stories of opera and other genres. Bethany most recently appeared in Music On Site's 2021 Scenes Program as Zerlina from *Don Giovanni* and Gretel from *Hänsel und Gretel*. She also played Blanche Noyes in Opera Kansas' 2021 world premiere of *Staggerwing*. A student at Friends University, she sang Servilia in *Le Clemenza di Tito*, Morgana in

*Alcina*, and Miss Silverpeal in *The Impresario*. Drawn to the intricate word-painting of art song, she has put on several recitals and made semifinals in NATS for art song and music theater. Bethany is the soprano section leader at Eastminster Presbyterian Church.

## Lucy Enns



Hi! I'm Lucy and I'm a Sophomore Music Education Major here at Friends University. I'm so excited to be performing in my first opera at Friends, and I'm ready to show off everything I have learned! I want to thank my parents, my friends, and my amazing professors for helping me and supporting throughout this journey!

## Brandon Rose



Brandon is majoring music theatre at Friends! This is his first opera, but he has been in many productions! He has been in *Bright Star*, *Radium Girls*, *The Importance of Being Earnest*, *Leaving Iowa*, *Working*, *Baskerville*, and recently played Ellery Queen in *Calamity Town*. He also got his first ever professional gig

at Crown Uptown playing in *The Addams Family Musical* this June! His acting career, he feels, is really starting to take off and he can't wait to see where the future leads him!

## Zachary Garraway



Hey, I'm Zachary Garraway! I'm a freshman at Friends University and this is the first opera I have ever been a part of. I have really enjoyed being a part of *Fables*, and I'm excited for all of you to watch us perform!

## Davis Green



Davis is a first year transfer student from the University of Kansas. He graduated from Trinity Academy in 2021 after 8 years of acting in various shows, playing characters such as Black Stache in *Peter and the Starcatcher*, or Terk in Disney's *Tarzan*. After a semester at KU, he returned to Wichita and is now pursuing a BM in Music Education. In his free time, he loves to do solve math equations, play piano, go shopping with friends, and write his own music. In the future, Davis wants to become a choir teacher at a Private Christian High-school.

## Abigail Hale



Abigail is a senior at Friends, double majoring in musical theatre and vocal performance. She has participated in choirs and gained valuable experience in both opera and musical theatre, spending time at Wichita Grand Opera and Music Theatre of Wichita. Some of her favorite roles include Laurey Williams in *Oklahoma!* and Mae Tuck in *Tuck Everlasting*. The highlight of her year was playing the role of Meg March in Friend's *Little Women*. When she isn't singing, she enjoys reading, composing music, dancing ballet, and drinking copious amounts of coffee.

## Joshua Kelley



I'm Josh Kelley and I'm a sophomore at Friends University. I am a music theater major, and have been involved in opera for two years now. I've enjoyed working on this production of *Fables* and hope it leaves an impression on you!



## Hannah Howard



will attend Opera Seme, a young artist program in Arezzo, Italy.

Hannah Howard is a mezzo-soprano. Currently a student of Charleen Ayers at Friends, Hannah will graduate in 2023 with a B.A. in Music and B.S. in Accounting. She made her debut on the stage in spring 2020 as Ida in Johann Strauss II's *Die Fledermaus*. She played her first major role in fall 2020 as Ruggiero in Handel's *Alcina*. Most recently, Hannah played Sesto in Mozart's *La Clemenza di Tito*. In the summer of 2022, she

## Salma Peña



Chamber Choir. Salma is debuting in her first opera role, and is excited to share her work and take the audience on a journey.

Salma Peña is a junior vocal music education major born and raised in Southwestern, Kansas. During her time at Friends University, Salma has appeared in shows such as: *Die Fledermaus*, *Alcina*, and *Working the Musical*. She is also a proud member of the Singing Quakers and in years past, participated in Concert Band, Jazz Vocal Ensemble, and

## Jordan Roth



at Friends University under Matthew Schloneger. He possesses a spot in the 'Singing Quakers' ensemble and is looking forward to what opportunities will come his way.

Jordan Roth, bass-baritone, has performed roles with community theater establishments, academic opera programs, and professional companies. Some of his favorite roles to perform include Father from *Hansel and Gretel*, Balthazar from *Amahl and the Night Visitors*, Orfeo from *La Favola D'Orfeo*, Bunthorne from *Patience*, and more.

Roth is currently studying Vocal Performance

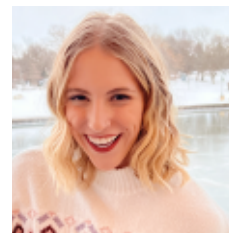
## Braden Sweet



graduating and hopes to spread God's love through his performing.

Braden Sweet is a 1st semester junior at Friends majoring in Music Theatre. He is thrilled to be a part of *Fables*, his first production at Friends. This is Braden's very first opera, and he has enjoyed getting to take on this new challenge. When he is not rehearsing or at school, he enjoys writing and producing music, singing, and spending time with friends. He plans on pursuing a professional theatre career after

## Rachel Mullen



Rachel Mullen is a transfer freshman majoring in Speech and Theatre Education with a minor in Music Theatre. She's been in musicals and other performances ever since she was five but was heavily involved in high school; there she found her passion. *Fables* is her first opera, and she is excited to further her abilities at Friends.

# PRODUCTION BIOS

## Ashley Winters, Stage Director



and maintains a private studio. Winters has sung with Opera Kansas, the Wichita Chamber Chorale, Kansas City Lyric Opera, and is a founding member of the nationally acclaimed Octetarium, among many others. Favorite roles include the *Queen of the Night*, Lucy in Menotti's *The Telephone*, and Mabel from *Pirates of Penzance*. She lives in Wichita with her family.

Soprano Ashley Winters, has "a voice as sparkling-clear as a chilly mountain stream" (Paul Horsley, *The Independent Insider*). She is the Managing Artistic Director of Opera Kansas, the Director of Music and Choirs at St. Stephen's Episcopal Church, teaches Applied Voice, Middle School Theatre, and Public Speaking at Wichita Collegiate School

## Dr. Matthew Schloneger, Music Director & Producer



with Opera Theatre of St. Louis, Operafestival di Roma, Wichita Grand Opera, and Opera Kansas among others. Schloneger has directed scenes presented at the national finals of the National Opera Association Collegiate Opera Scenes Competition each of the last two years.

Dr. Matthew Schloneger, Associate Professor of Voice and Interim Fine Arts Division Co-Chair, coordinates the voice area and directs operas and musicals at Friends. He was a Rotary Scholar at the Civica Scuola di Musica di Milano and has a certificate in French language from the Sorbonne (Paris). He has performed principal operatic roles

## Vanessa Whalen, Rehearsal Pianist & Vocal Coach



Throughout her many years in the Wichita community, Vanessa has served as coach and accompanist for Wichita State University, Friends University, Wichita East High School, Unity Church of Wichita, Woodland United Methodist Church, the Wichita Symphony Orchestra Chorus, and Opera Kansas. She enjoys working with singers and instrumentalists alike. In addition to being a musician, Vanessa has enjoyed a career as a clinical social worker and play therapist, and holds degrees from Wichita State University and the University of Kansas.

Vanessa Whalen, Rehearsal Pianist & Vocal Coach

## Gabriel Karst, Orchestra Conductor



conductor for today's one act production of Gian Carlo Menotti's *Old Maid and the Thief*.

Gabriel Karst is a Senior at Friends and is working towards his Music degree. Over his time at Friends University he has also been the student conductor for the Concert Band as well as the world-class Singing Quakers and was the conductor for Friends University Music Theater's production of *Working*. Gabriel is the

# THANKS FOR COMING!

Contributions like yours is what keeps our programs running at the quality we proudly maintain. Won't you consider a donation via the following convenient methods:

**PayPal:** [friends.edu/paypal](https://friends.edu/paypal)

**Join:** Friends of Fine Arts: [friends.edu/givefinearts](https://friends.edu/givefinearts)

**Mail:** Friends University Fine Arts  
2100 W. University Ave.  
Wichita, KS 67213

## JOIN US AT ANOTHER EVENT!

**More info and full calendar at [friends.edu/fineartstickets](https://friends.edu/fineartstickets)**

### **Singing Quakers Home Concert**

Friday & Saturday, March 18-19 | 7:30 p.m.

Sunday, March 20 | 2 p.m.

Sebits Auditorium

### **Friends University Community Orchestra**

Tuesday, March 29 | 7:30 p.m.

Sebits Auditorium

### **Concert Band with Wichita East High School**

Monday, April 4 | 7:30 p.m.

Sebits Auditorium

### **Concert Choir Concert**

Thursday & Friday, April 7-8 | 7:30 p.m.

Sebits Auditorium

### **Symphony of Spring**

Friday & Saturday, April 22-23 | 7:30 p.m.

Sunday, April 24 | 2 p.m.

Sebits Auditorium

### **International Day of Jazz**

Saturday, April 30 | 7:30 p.m.

Sebits Auditorium

2100 W. University Ave. | Wichita, KS 67213 | [friends.edu/finearts](https://friends.edu/finearts)

**FAITH** | **FRIENDS** | **FUTURE**